

## FEATURED STOCKS

Corning Inc	OptionsXpress
IDEX Corp	Oshkosh Truck
IBM Corp	UnitedHealth
j2 Global	ValueClick

## GROWTH & INCOME

Brazil-ETF	Asia/China-ETF
------------	----------------

## THE RIGHT MOVES

*By Donald Pearson*

Today, as we draw to a close on the third quarter and prepare for the fourth, it's time to take a step back,

doesn't matter if I'm right or not, if our portfolio holdings are working properly. The companies and the countries in which we are invested are the key, not the timing of the market, nor the perception of the people making the news.

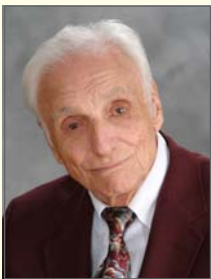
No matter what news article I read, or TV show I watch, the market news is almost always negative. Even on a good day someone is referring to what might occur tomorrow, and this makes me even more committed to continue on the course we've set for ourselves. I've simply got to know the country or the company is a sound investment predicated on growth, value, and a multiple of basic fundamentals. Once the commitment is made we'll simply give it the time needed to accumulate the reward sought. Many countries today are growing faster than our US economy, and we can select an ETF that will give us exactly this. China (FXI), India (IIF), and Australia (IAF-EWA) are a few, and we'll continue adding more and more. Canada (EWC) has recently been added to many portfolios simply because of its growing economy. As we move through the upcoming earning season, we'll continue to monitor every company's reporting numbers. Those that under perform will become candidates for replacement and may be swapped out for one of these opportunities. We have about 20 different countries and sectors in our ETF base today which we believe can enhance everyone's portfolio depending on the risk.

To better diversify with safety, we also pursue solid US companies favoring their shareholders. In the first four months of this year 133 companies increased their dividends over prior year, and we have placed many of these into our portfolios. Many have also built into their business plans stock buybacks of significant value. Often a quality growth company can improve its future value overnight with a simple announcement. We are

review the many events that have occurred, and determine how they will affect the forth quarter and 2008. Although this quarter was exceptionally volatile, it's going to end on a positive note. Housing stocks were down over 20% and financials were down close to 5%, but other sectors such as energy and technology were up, and this preaches diversity as a roadmap to success. The US economy continues to lag behind other parts of the world, but this gives us additional opportunities in other countries.

I believe the learning here is what we already knew, and the lesson has simply reinforced our commitment. Actually, it's stronger today than it was three months ago. Before and after the rate cut, many financials were, and still are, having a difficult time and are far from out of the woods. Home builders and their suppliers are still facing significant slowdowns, and this, along with higher mortgage delinquencies, has led to tighter credit availability. As an investor, this is an area to stay clear of today, but somewhere in the not to distant future this will change and there will be tremendous upside opportunity.

Greenspan and many other forecasters are predicting a possible recession, while others are telling us the rate cut will correct our problems and we're on our way back to prosperity. Once again, the Fed has proven that anyone calling himself a technical analyst cannot consistently predict the future by referring to past performance. I thought the rate cut would be a half point, and I also think the rate will be reduced again in December by one quarter point. More important, it really



**Walter D. Pearson**  
Chairman



**Donald E. Pearson**  
President



**Sandra Alberti**  
Publishing President

**Investment Letters are complimentary to our clients with managed accounts!**

# LONG TERM INVESTING

I recently read an article written by another person in the investment profession which echoes my sentiments also. As a matter of fact, I believe he has said it much better than I could. However I shall let you read a piece from his writings:

"That of course, is a simple way of saying I'm opposed to selling to achieve realized profits and the reason why is, in effect, the essence of the entire story as to what sophisticated long term really is and what its ultimate goals are. Long term investing, to be highly effective, must be done with intense care and thorough concentration and its aim clearly is to unearth the ideal company to own – for the long term (call it several years), or the very long term. Thus the high ideal would be to discover a company worth holding, perhaps forever, or maybe 'almost forever'. Can it be done? Yes it can be. I've already done it with three or four companies. What would make a company worth holding for the near lifetime or more? That's not hard to figure out when you think about it. In the difficult complex world we inhabit today, look for urgent, vital, ongoing goals unlikely to ever disappear or fade or diminish. Examples come to mind with little difficulty; maintain health, improve health, prevent disease, restore bodily parts, lengthen lifespan, prevent terrorism, prevent theft - these are just a few."

"Thinking broadly, I label this exciting and challenging quest as the search for the 3M's: making, management and marketing. Most important; what does the company make (or provide) and almost as important, how exceptionally skilled is management? Is it truly dedicated, heavily invested, knowledgeable, experienced, flexible and sensitive to suggestion? Arriving at this decision necessitates intense, thorough observation and analysis, a penetrating X-ray vision, so to speak. And also, does this firm cleverly, creatively, clearly, but imaginatively, present its product or service to the public, so that the citizenry is not only informed but intrigued? In my experience over time, most companies that I have judged as exceptional have tended to stay superior. Many studies have been done comparing different investment styles and in every case the data shows that those accounts that trade the least, achieve the best results. Absolutely nothing is more important than possessing a collection of superior high quality companies. They are the greatest guarantors over time of both safety and success."

There are further benefits which accrue to the long term investor. Let's take Cisco as an example. You might have bought it sooner or later than 8-91, in which case you might have paid a bit more or less, but back around that time you might have bought 25 shares for \$1200. We are now almost 16 years along the trail, and Cisco has split a few times, so that now your 25 shares amount to 3600 shares and your \$1200 investment now totals to about \$100,000. In addition to that I consider Cisco to be a good company to own, and I wouldn't consider selling unless necessary. Thinking a little further, you might have sold somewhere along the line and taken a profit. In that case it would be necessary to find a company just as good, but even then you would be running a bit behind. There would be a commission to pay on the way out and another to pay on the way in, and even though these are much smaller today, they are still there. Then too, one must consider the taxes. If you had sold Cisco along the way you would not have as much left to invest because of the tax on the profits. With long term investing the profits accrue, and no taxes are due if the stock is not sold.

From time to time one finds that the company one owns has changed direction, or management has changed, or something has come up which changes the outlook of the company. That is when it becomes necessary to reevaluate your investment, wherein you will hold or sell depending upon the outcome of your research. I can remember a number of years ago when we were recommending American Marietta, which increased in value tenfold in not too long a period of time. I had thought this would be a "forever" holding, but something came up, and the company decided to merge with Martin and everything changed.

At any rate I wish to go on record as saying that I completely agree with the gentleman who wrote his piece, and I strongly recommend thinking and investing long term. Income taxes can be held down in this manner and hopefully fortunes can be made.

*By Walter Pearson*

Copyright © 2007 Pearson Capital, Inc. - All Rights Reserved - Sources: Pearson Capital, Inc. research, various publications and the Internet

**Source Rating Key for PCI's featured stocks: Pearson Investment Growth Rating measures long-term past and future growth.**

**Pearson Value Rating measures current value in terms of potential for the dollar. Investors Business Daily measures growth and relative price strength.**

**S&P measures financial quality and growth potential. Value Line measures timeliness, value and safety.**

Information & data obtained from other sources is believed to be reliable, but its accuracy and completeness can not be guaranteed.

Walter Pearson is the former President of First New England Securities, Co., Inc. and at that time, also managed the Statistical Department.

He is the author of the book, "Investing for the Millions" and Publisher Emeritus for the Pearson Investment Letter.

At this time, Mr. Pearson is Chairman of the Board of Pearson Capital, Inc.

He is a contributing columnist for various publications and is listed in Who's Who in America.

**"Remember the Lord your God, for it is He who gives you the ability to produce wealth. Deut. 8:18"**

## PEARSON CAPITAL'S RECOMMENDED STOCKS FOR

October 2007

### CORNING INCORPORATED (GLW) NYSE PRICE: \$24.65

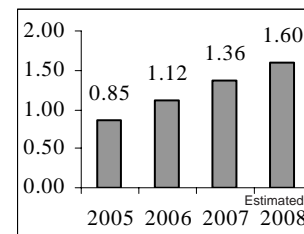
GLW is a global, technology-based corporation that operates in four business segments: Display Technologies, Telecommunications, Environmental Technologies and Life Sciences. Display technologies segment manufactures liquid crystal display (LCD) glass for flat panel displays. Telecommunications segment manufactures optical fiber and cable, and hardware and equipment components for the worldwide telecommunications industry. Environmental Technologies segment manufactures ceramic substrates and filters for automobile and diesel applications. Life Sciences segment manufactures glass and plastic consumables for scientific applications. On December 31, 2006, the Company, through its wholly owned subsidiary, Dow Corning Enterprises, Inc. (DCEI), sold its 60% ownership interest in DC Dongjue Silicone Group Co., Ltd.

Type: Growth  
Sector: Technology

Institutional Holdings: 609  
Industry: Tech. Equipment

#### Ratings & Recommendations Earnings per share

Current P/E Ratio: **20.7**  
Annual Yield: **0.80%**  
Annual Dividend: **\$0.20**  
Investor's Business Daily: **B-**  
Pearson Growth & Value: **A**  
Morningstar Rating: **B**  
Standard&Poor Rating: **A**  
Value Line Rating: **B**



### IDEX CORPORATION (IEX) NASDAQ PRICE: \$36.39

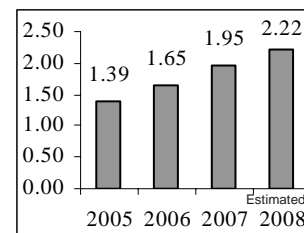
IEX is an applied solutions company specializing in fluid and metering technologies, health and science technologies, dispensing equipment and fire, safety and other diversified products. IDEX manufactures an array of engineered industrial products sold to customers in a variety of industries around the world. IDEX consists of four business segments. The Fluid & Metering Technologies segment consists of Banjo, Liquid Controls, Pulsafeeder, Versa-Matic, Viking Pump (Viking) and Warren Rupp business units. The Health & Science Technologies segment includes Eastern Plastics, Gast Manufacturing (Gast), Micropump, Rheodyne and Scivex. The Dispensing Equipment segment comprises FAST & Fluid Management and Fluid Management. The Fire & Safety/Diversified Products segment includes Hale Products (Hale) fire suppression and rescue tools businesses.

Type: Growth  
Sector: Industrial Goods

Institutional Holdings: 236  
Industry: Divers. Machinery

#### Ratings & Recommendations Earnings per share

Current P/E Ratio: **18.6**  
Annual Yield: **1.20%**  
Annual Dividend: **\$0.48**  
Investor's Business Daily: **A**  
Pearson Growth & Value: **B+**  
Morningstar Rating: **B**  
Standard&Poor Rating: **N/R**  
Value Line Rating: **C**



### INTERNATIONAL BUSINESS MACHINES CORPORATION (IBM) NYSE PRICE: \$117.80

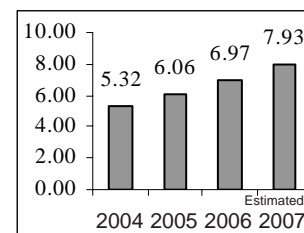
IBM is an information technology company. The Company's major operations comprise a Global Services segment, a Systems and Technology Group, a Software segment and a Global Financing segment. IBM's business comprises three principal business segments: Systems and Financing, Software and Services. The majority of the Company's enterprise business, which excludes the Company's original equipment manufacturer technology business, occurs in industries that are grouped into six sectors: financial services, public, industrial, distribution, communications, and small and medium business. In July 2007, IBM acquired Watchfire Corporation, a privately held security and compliance testing software company based in Waltham, MA. In Aug. 2007, IBM acquired WebDialogs, Inc. In Sept. 2007, IBM completed the acquisition of DataMirror Corp.

Type: Growth  
Sector: Technology

Institutional Holdings: 901  
Industry: Div. Comp. Systems

#### Ratings & Recommendations Earnings per share

Current P/E Ratio: **18.1**  
Annual Yield: **1.40%**  
Annual Dividend: **\$1.60**  
Investor's Business Daily: **A-**  
Pearson Growth & Value: **A**  
Morningstar Rating: **C**  
Standard&Poor Rating: **A**  
Value Line Rating: **A**



### j2 GLOBAL COMMUNICATIONS, INC (JCOM) NASDAQ PRICE: \$32.73

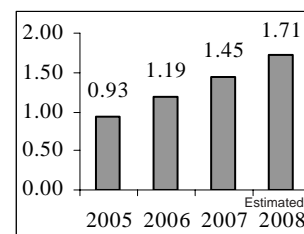
JCOM provides outsourced, value-added messaging and communications services to individuals and businesses worldwide. JCOM offers fax, voicemail, e-mail and call handling services, as well as bundled suites of certain of these services. It markets the services principally under the brand names eFax, eFax Corporate, UniFax, Send2Fax, eFax Broadcast, jBlast, jConnect, Onebox, Onebox Receptionist, eVoice, eVoiceReceptionist and Electric Mail. It delivers many of its services through its global telephony/Internet protocol (IP) network, which spans more than 2,700 cities in 37 countries across five continents. The Company markets its services to a spectrum of prospective customers, including individuals, small- to medium-sized businesses, large enterprises and government organizations. In July 2006, the Company purchased Send2Fax, LLC (Send2Fax).

Type: Growth  
Sector: Technology

Institutional Holdings: 222  
Industry: Internet Software

#### Ratings & Recommendations Earnings per share

Current P/E Ratio: **27.3**  
Annual Yield: **0%**  
Annual Dividend: **\$0**  
Investor's Business Daily: **B+**  
Pearson Growth & Value: **B**  
Morningstar Rating: **N/R**  
Standard&Poor Rating: **N/R**  
Value Line Rating: **A**



## PEARSON CAPITAL'S RECOMMENDED STOCKS FOR

October 2007

### OPTIONSXPRESS HOLDINGS (OXPS) NASDAQ PRICE: \$26.14

optionsXpress Holdings, Inc.(optionsXpress) offers a suite of brokerage services for option, stock, futures, mutual fund and fixed-income investors. The Company's brokerage platform reflects the combination of its technology and customer service. Its browser-based technology delivers an array of differentiating trading tools, allowing both retail and professional investors to identify, analyze and execute a range of investment strategies. In January 2007, the Company completed the acquisition of XpressTrade, LLC. XpressTrade, based in Chicago, is an Internet-based futures and foreign exchange broker, which offers self-directed retail customers, 24-hour access to 25 exchanges, and over 300 futures products worldwide through its browser-based trading platform.

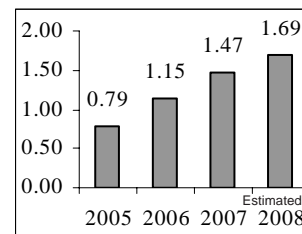
Type: Growth  
Sector: Financial

Institutional Holdings: 170  
Industry: Inv. Brokerage

#### Ratings & Recommendations

Current P/E Ratio: **20.5**  
Annual Yield: **1.00%**  
Annual Dividend: **\$0.25**  
Investor's Business Daily: **A-**  
Pearson Growth & Value: **A-**  
Morningstar Rating: **B**  
Standard&Poor Rating: **B**  
Value Line Rating: **C**

#### Earnings per share



### OSHKOSH TRUCK CORPORATION (OSK) NYSE PRICE: \$61.97

OSK designs, manufactures and markets a range of commercial, fire and emergency, and military trucks under the Oshkosh and Pierce trademarks; truck bodies under the McNeilus, Medtec, Jerr-Dan, BAI, London, Geesink and Norba trademarks; mobile and stationary compactors and transfer stations under the Kiggen trademark; portable and stationary concrete batch plants under the CON-E-CO and McNeilus trademarks, and mobile medical trailers under the AK trademark. Oshkosh operates in three segments: fire and emergency segment, defense segment and commercial segment. On 07/31/06, the Company acquired AK Specialty Vehicles, LLC (AK). On August 14, 2006, the Company acquired Iowa Mold Tooling Co., Inc. In December 2006, the Company completed the acquisition of JLG Industries, Inc.

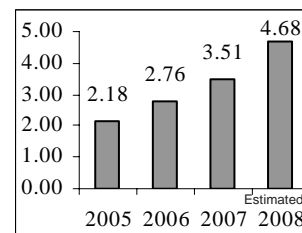
Type: Growth  
Sector: Consumer Goods

Institutional Holdings: 244  
Industry: Trucks/Vehicles

#### Ratings & Recommendations

Current P/E Ratio: **19.7**  
Annual Yield: **0.70%**  
Annual Dividend: **\$0.40**  
Investor's Business Daily: **B+**  
Pearson Growth & Value: **A-**  
Morningstar Rating: **C**  
Standard&Poor Rating: **B**  
Value Line Rating: **B**

#### Earnings per share



### UNITEDHEALTH GROUP INCORPORATED (UNH) NYSE PRICE: \$48.43

UnitedHealth Group Incorporated (UnitedHealth Group) is a diversified health and well-being company, serving approximately 70 million Americans. The Company provides individuals with access to healthcare services and resources through more than 520,000 physicians and other care providers and 4,700 hospitals across the United States. UnitedHealth Group conducts its operations through four operating divisions: Uniprise, Health Care Services, Specialized Care Services (SCS) and Ingenix. On December 1, 2006, the Company's Health Care Services business segment acquired the Student Insurance Division (Student Resources) of The MEGA Life and Health Insurance Company. On February 24, 2006, its Health Care Services business segment acquired John Deere Health Care, Inc.

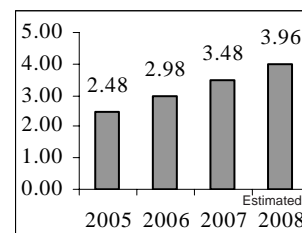
Type: Growth  
Sector: Healthcare

Institutional Holdings: 780  
Industry: Health Care Plans

#### Ratings & Recommendations

Current P/E Ratio: **15.2**  
Annual Yield: **0.10%**  
Annual Dividend: **\$0.03**  
Investor's Business Daily: **C+**  
Pearson Growth & Value: **A+**  
Morningstar Rating: **B**  
Standard&Poor Rating: **B**  
Value Line Rating: **C**

#### Earnings per share



### VALUECLICK, INC (VCLK) NASDAQ PRICE: \$22.46

ValueClick, Inc. is an online marketing services company, selling targeted and measurable online advertising campaigns and programs for advertisers and advertising agency customers, generating qualified customer leads, online sales and increased brand recognition on their behalf with large numbers of online consumers. Its customers are primarily direct marketers, brand advertisers and the advertising agencies that service these groups. The Company operates in four segments: Media, Affiliate Marketing, Comparison Shopping, and Technology. In December 2006, the Company acquired Shopping.net, which is based in London, the United Kingdom. Shopping.net owns and operates 27 Websites that provide comparison shopping, search and vertical market content to European online consumers.

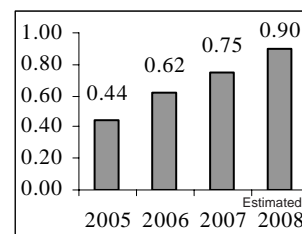
Type: Growth  
Sector: Services

Institutional Holdings: 300  
Industry: Advertising Agencies

#### Ratings & Recommendations

Current P/E Ratio: **30.2**  
Annual Yield: **0%**  
Annual Dividend: **\$0**  
Investor's Business Daily: **C**  
Pearson Growth & Value: **B**  
Morningstar Rating: **C**  
Standard&Poor Rating: **B**  
Value Line Rating: **C**

#### Earnings per share



## PEARSON CAPITAL'S RECOMMENDED STOCKS FOR

October 2007 - ETF's

### iSHARES MSCI BRAZIL INDEX FUND (EWZ) AMEX PRICE: \$73.55

iShares MSCI Brazil - Index Fund  
Objective: Country Fund-Brazil

Type: iShare  
Category: Large Value

Area/Sector: Latin America  
Asset Allocation: Diversified

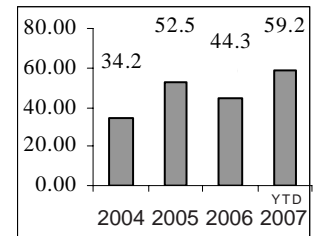
The investment seeks to provide investment results that correspond generally to the price and yield performance of publicly traded securities in the Brazilian market, as measured by the MSCI Brazil index. The fund normally invests at least 95% of assets in the securities of its underlying index and in ADRs based on the securities in its underlying index. It uses a representative sampling strategy to try to track the index. The index consists of stocks traded primarily on the Bolsa de Valores de So Paulo. It is nondiversified.

Fund Inception: 07/10/00

#### Ratings & Recommendations

Current P/E Ratio: **N/R**  
Annual Yield: **1.53%**  
Annual Dividend: **\$1.13**  
Investor's Business Daily: **N/R**  
Pearson Growth & Value: **A-**  
Morningstar Rating: **C**  
Standard&Poor Rating: **N/R**  
Value Line Rating: **N/R**

#### Performance by %



### POWERSHARES GOLDEN DRAGON - CHINA PORTFOLIO (PGJ) AMEX PRICE: \$33.33

Powershares Golden Dragon  
Objective: Country Fund-China

Type: Powershares  
Category: Mid-Cap Blend

Area/Sector: Asia/China  
Asset Allocation: Diversified

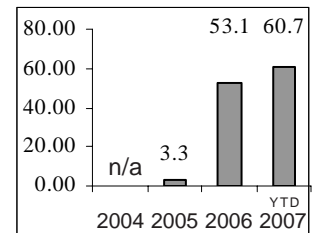
The investment seeks results that correspond generally to the price and yield (before the Fund's fees and expenses) of an equity index called the Halter USX China index(SM). The fund normally invests at least 80% of total assets in equity securities of companies deriving a majority of their revenues from the People's Republic of China. It may invest at least 90% of total assets in equity securities that comprise the China Index. The fund seeks to match the performance of the China Index. It is nondiversified.

Fund Inception: 12/01/06

#### Ratings & Recommendations

Current P/E Ratio: **N/R**  
Annual Yield: **0.90%**  
Annual Dividend: **\$0.30**  
Investor's Business Daily: **N/R**  
Pearson Growth & Value: **A+**  
Morningstar Rating: **N/R**  
Standard&Poor Rating: **N/R**  
Value Line Rating: **N/R**

#### Performance by %



### CD BUSTER 2007

ETF Description	Symbol	Yield	Shares	Price/Sh	\$ Invested	Current-\$	YTD-Total \$
US-High Yield	DCS	5.32	109	\$22.98	\$2,504.82	\$19.97	\$2,176.73
US-Diversified	DVY	3.16	36	\$70.73	\$2,546.28	\$69.30	\$2,494.80
Europe-Diversified	EFA	2.13	37	\$73.22	\$2,709.14	\$82.59	\$3,055.83
Global-Value	EFV	1.69	34	\$72.20	\$2,454.80	\$78.09	\$2,655.06
Australia-Diversified	EWA	2.92	106	\$23.50	\$2,491.00	\$31.77	\$3,367.62
Singapore-Diversified	EWS	2.81	223	\$11.20	\$2,497.60	\$14.82	\$3,304.86
China-Diversified	FXI	1.28	22	\$111.45	\$2,451.90	\$180.00	\$3,960.00
India-Diversified	IIF	0.60	49	\$50.82	\$2,490.18	\$50.86	\$2,492.14
Global-Financial	IXG	1.21	28	\$90.55	\$2,535.40	\$89.95	\$2,518.60
US-Value	VTV	2.32	34	\$68.23	\$2,319.82	\$71.51	\$2,431.34
<b>Total:</b>	<b>-</b>	<b>AVG 2.34%</b>	<b>-</b>	<b>-</b>	<b>\$25,000.94</b>	<b>-</b>	<b>\$28,456.98</b>

A \$25,000 CD returning 5% (annual year-end value of \$26,250) has a current value of \$25,937.50 + \$937.50 = 3.75%

The same \$25,000.94 invested in our CD Buster January 1, 2007 would have a value of \$28,456.98 on September 30, 2007 + \$3,456.04 = (+13.8%)

For additional updates go to [www.pearsoncapitalinc.com](http://www.pearsoncapitalinc.com) Go to: "CD Buster 07"

#### DISCLAIMER:

Pearson Capital, Inc. makes no guarantee as to the accuracy or completeness of this data. Information is provided for informational purposes only, and Pearson Capital, Inc. shall not be liable for any errors or omissions, or for any actions taken in reliance thereon.

**CD Buster is a stock simulation portfolio created by Pearson Capital, Inc. for informational/educational purposes only.**

#### The 2007 CD Buster

portfolios were created for demonstrational purpose from our "top ten" list of ETF's. The start up prices were taken from the market's closing price on December 29, 2006. This diversified portfolio demonstrates how selected ETF's could outperform the regular bank CD yielding 5.0% annually. This example does not include trading fees and management fees as well as dividends earned. Current performance does not indicate or guarantee future performance. All client portfolios are customized differently, and include individual equities and ETF's to meet their individual growth objectives and goals. There are no guarantees as to the profit of each - some may lose money.

**+13.8%**

# WALL STREET INDEXES

Indexes	2001	2002	2003	2004	2005	2006	2007/YTD
S&P 500	(13.3%)	(23.4%)	26.4%	9.0%	3.0%	13.6%	+7.7%
Dow Jones	(7.1%)	(16.8%)	25.3%	3.2%	(0.61%)	16.3%	+11.5%
Nasdaq	(21.1%)	(31.5%)	50.0%	8.6%	1.37%	9.5%	+11.9%
Russell 2000	1.0%	(21.6%)	45.4%	17.0%	3.32%	17.0%	+ 2.3%
Our CD Buster		8.1%	56.7%	22.8%	(Disputed)	1.8%	+13.8%
CD Annual Average	3.0%	2.3%	1.5%	1.5%	3.5%	5.0%	+3.75%

## MARKET VIEW

Christopher Carothers - PCI's Stock Analyst

**Economic Flows:** After reliquifying the mortgage market by cutting the discount rate from 6.25% to 5.75%, the Federal Reserve has taken additional steps to relieve the banks' credit crunch by reducing interest rates by one half of one percent. This will provide direct relief to both banks and homeowners that are having their adjustable mortgages increase sharply this year and next. This is a large group of homeowners that bought at the height of the real estate market. Most of this group will readjust in February and taper off in December. The government has also taken steps to help homeowners move from an adjustable mortgage to a fixed mortgage plan within the next few months. These methods hopefully will slow or stop the rash of home foreclosures.



**Key Point:** *The Federal Reserve has lowered interest rates by 50 basis points.*

**Earnings Flows:** October is the beginning of earnings season. Some companies will continue to meet or exceed estimates while others will surprise to the downside. Expect continued volatility as those companies that have supported the home will continue to show earnings problems. Companies that depend on the United States for most of their earnings will see a slowdown for the next year. Many corporations within the S&P 500 get much of their growth overseas and are benefiting from the declining dollar.

**Key Point:** *Expect volatility during the beginning of earnings season.*

**Cash Flows:** Private equity firms are now struggling to renegotiate existing deals and to get financing for future ones. Credit markets are now reluctant to back many ideas that are put on the table. However, in its place many foreign companies from countries such as China and Dubai, have stepped up to buy large equity stakes in American and European companies. Even though there is an indication of a possible slowdown in the US, previously stagnant areas such as Canada and Latin America have been steadily growing, creating more opportunities.

**Key point:** *Even though the US may be slowing, growth is picking up elsewhere. Additional Note: Earnings season for the third quarter is a predictor of the fourth. If earnings do well, usually it will continue into the New Year.*

## THE RIGHT MOVES - Continued from Page 1

recommending IBM this month because of its consistent performance, and they have raised their dividend 33% this year. Stocks within the S&P will raise dividends an average of 12% in 2007 verses 2006. Many of these are good buys today and can become even better buys tomorrow. We will continue to monitor. As we move into the forth quarter and 2008, we will also increase our holdings in Asia. Look for China/PGJ to be added to most portfolios as soon as a company reporting earnings in the upcoming reporting season falters.

## Pearson Capital, Inc.

P.O. Box 3739  
**Apollo Beach, Florida 33572**  
 Tel: (813) 641 - 7575  
 Fax: (813) 641 - 7755  
**Toll Free: (800) 510-0329**  
**www.pearsoncapitalinc.com**

1628 White Arrow Drive  
 Dover, Florida 33527  
 Tel: (813) 659 - 2560

Chairman Of The Board  
 Head Of Investment Research  
**Walter D. Pearson**  
 E-mail: [PearsonCap@aol.com](mailto:PearsonCap@aol.com)

President  
**Donald E. Pearson**  
 E-mail: [PearsonCapital@aol.com](mailto:PearsonCapital@aol.com)

Stock Analyst  
**Chris Carothers**  
[PearsonCapital2@yahoo.com](mailto:PearsonCapital2@yahoo.com)

Account Manager  
**Ann Hathaway**  
[PearsonCapital7@gmail.com](mailto:PearsonCapital7@gmail.com)

**The Pearson Investment Letter**  
 published monthly since 1982

Publishing President  
**Sandra Alberti**  
[PearsonCapital@aol.com](mailto:PearsonCapital@aol.com)

Editor  
**Roberta Wilde**

## Services Provided

Managed Accounts:  
 Individual - Joint - Custodial  
 Corporate - Partnership - Trust  
 IRA's; Roth - Trad - College - SEP  
 401(k) & 403(b) Rollovers - Transfers

Management fee of 1% annually  
 for accounts of \$25,000 or more  
 (2% for smaller accounts)

**Free consultation**  
**No hidden fees**

**Privacy Policy**

## Table of Contents

Walter's Wisdom:	2
Featured Stocks:	3
Featured Stocks:	4
ETF's:	5
Market Outlook / Pub.Notes:	6